

Pulling one of these lines will untangle the plastic pollution and free the seal. Can you find which one?



One of the biggest dangers to wildlife from plastic pollution is **entanglement**. Animals get tangled in plastic waste. They can get hurt and even die. We can help by Refusing, Reducing, Reusing and Recycling plastic. Join beach, river, and community clean-ups.

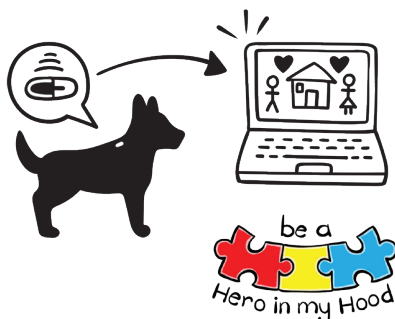
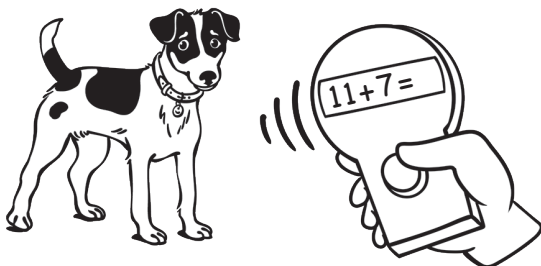
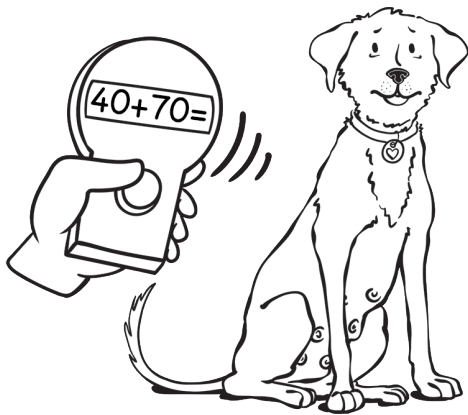
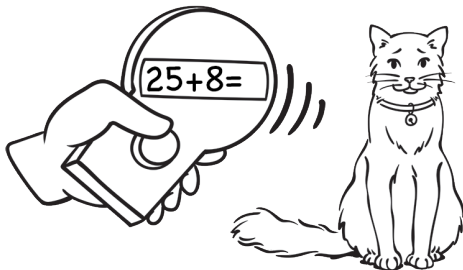
## You are the Hero!

**If you see an entangled animal, call the SPCA.**



# We want to go home

Help the vet identify the lost pets by solving the sums on the microchip scanners. Match the answer to their guardian's phone so they can get home!



## What is a microchip?

A microchip is a tiny electronic tag that is put under your pet's skin, and it stays there. It holds a special ID number. Lost pets are identified when they are scanned by a vet or shelter and then the pet's family is contacted.

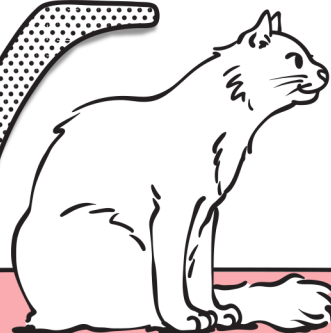
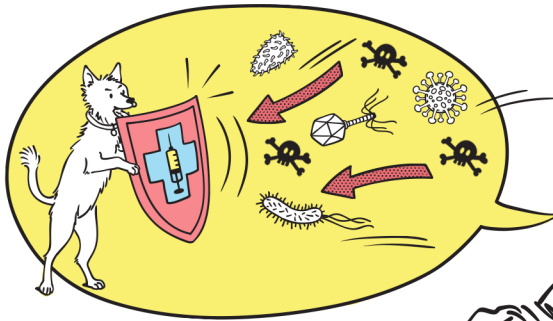
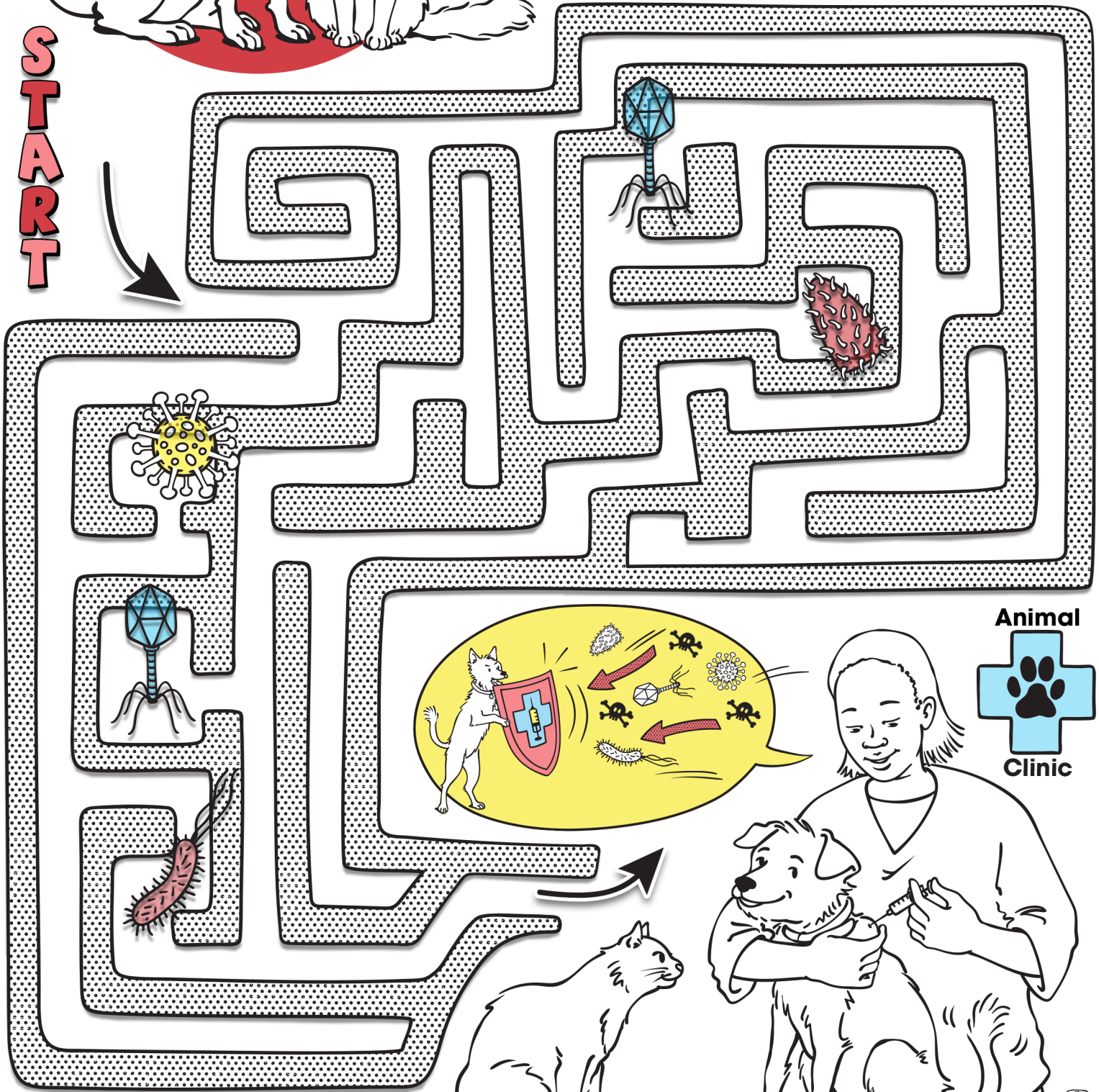


# SAFE FROM SICKNESS

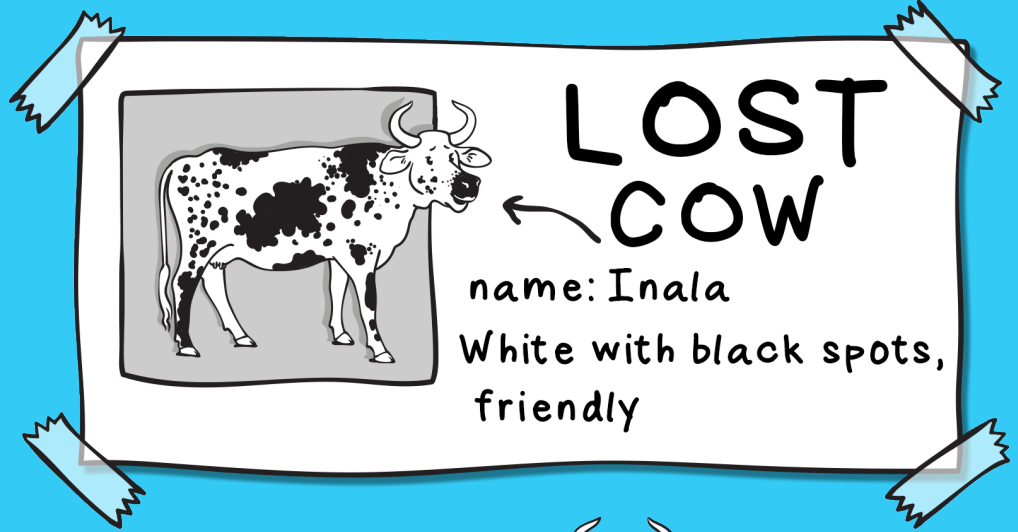
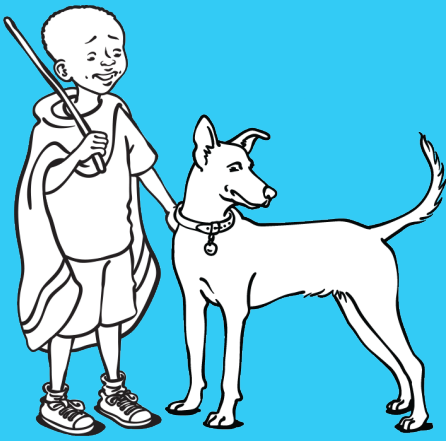
The pets need their vaccinations.  
Can you get them safely through  
the maze to the Animal Clinic?

**Keep away** from the viruses  
and bacteria!

START



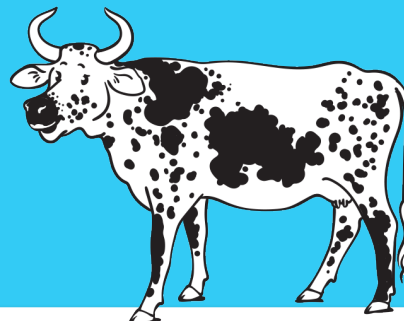
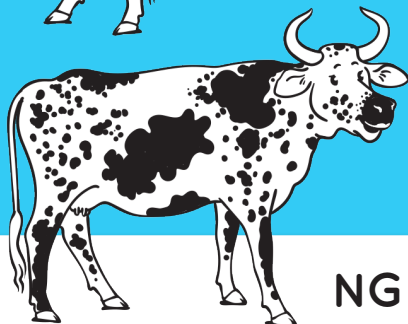
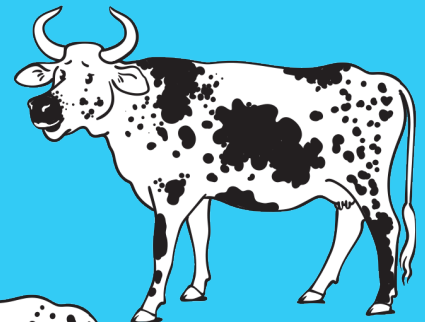
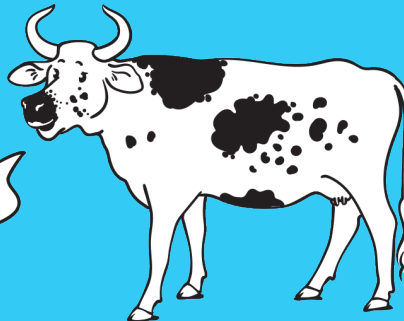
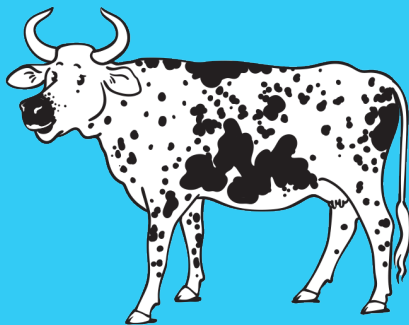
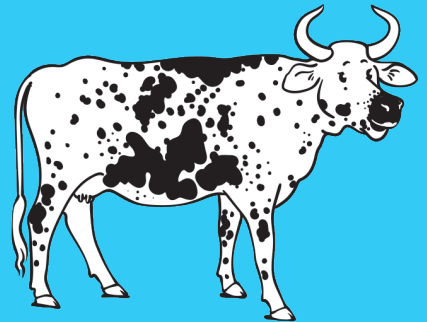
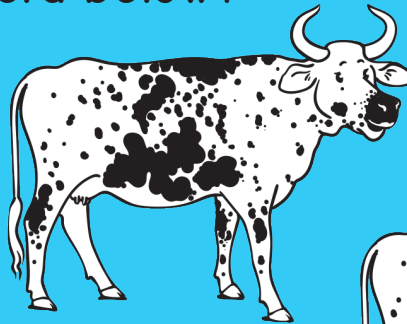
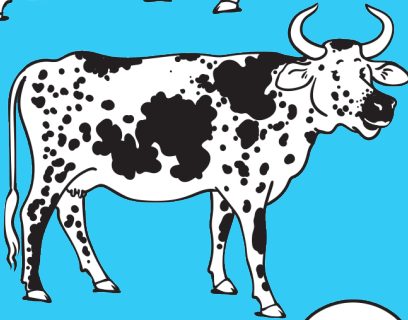
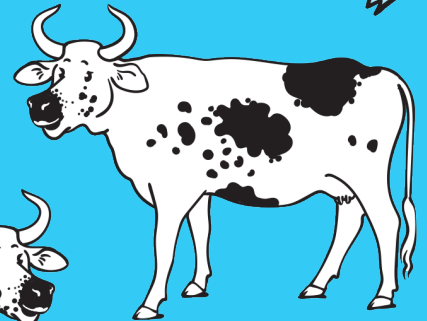
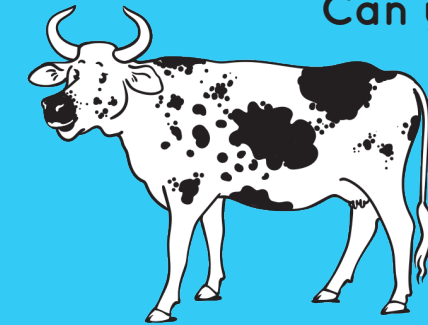
**Vaccinations** every year will help  
protect your pets from getting sick.



Lwazi is looking

for his cow, Inala.

Can you help him find her  
in the herd below?



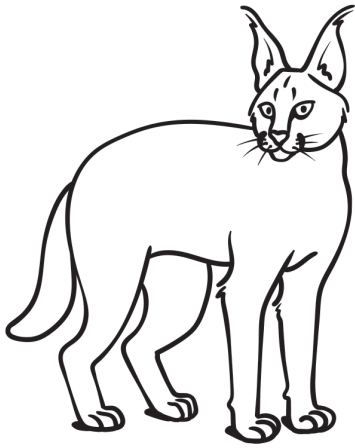
### NGUNI FACT

The Nguni cattle's skins are found with a mix of different black, brown and white patterns and no two will ever be the same. Their markings are the same as a fingerprint is to a human. Owners are able to recognise their cattle by these patterns.

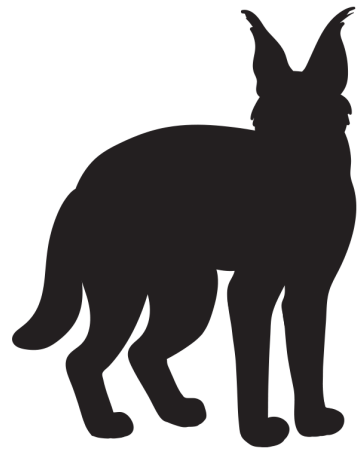




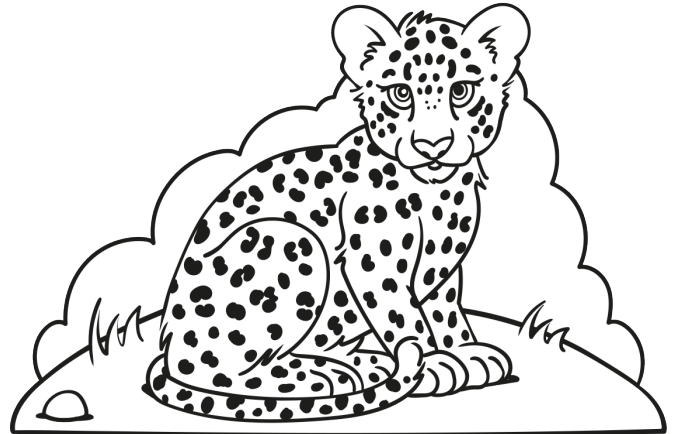
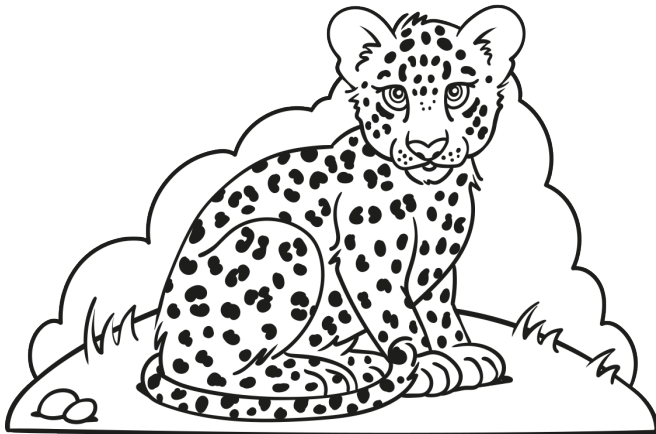
FIND THE CORRECT SHADOW



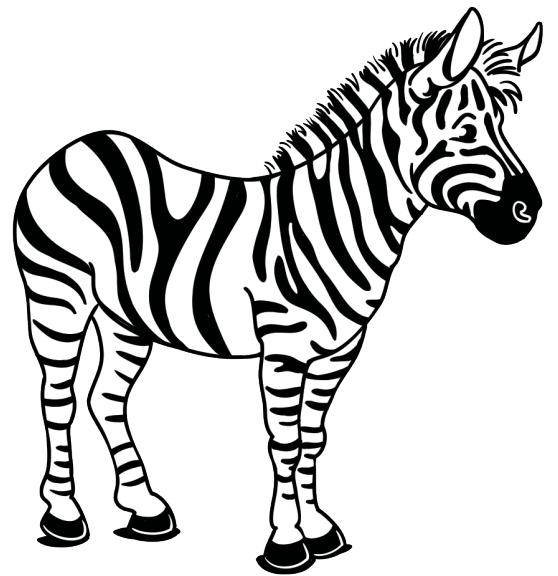
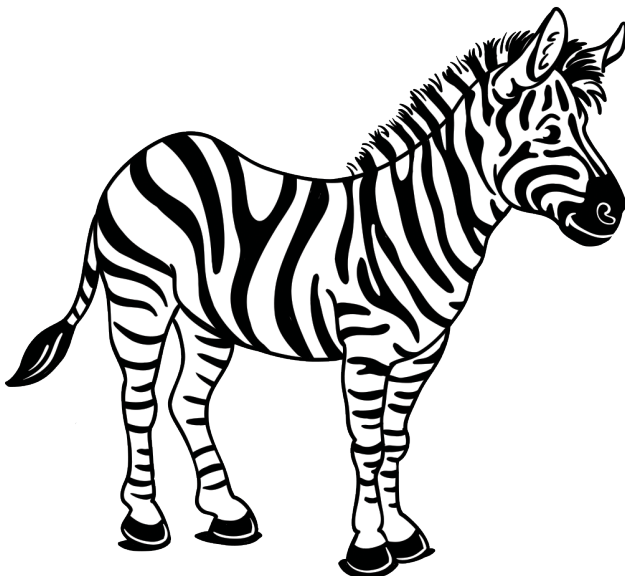
Caracal



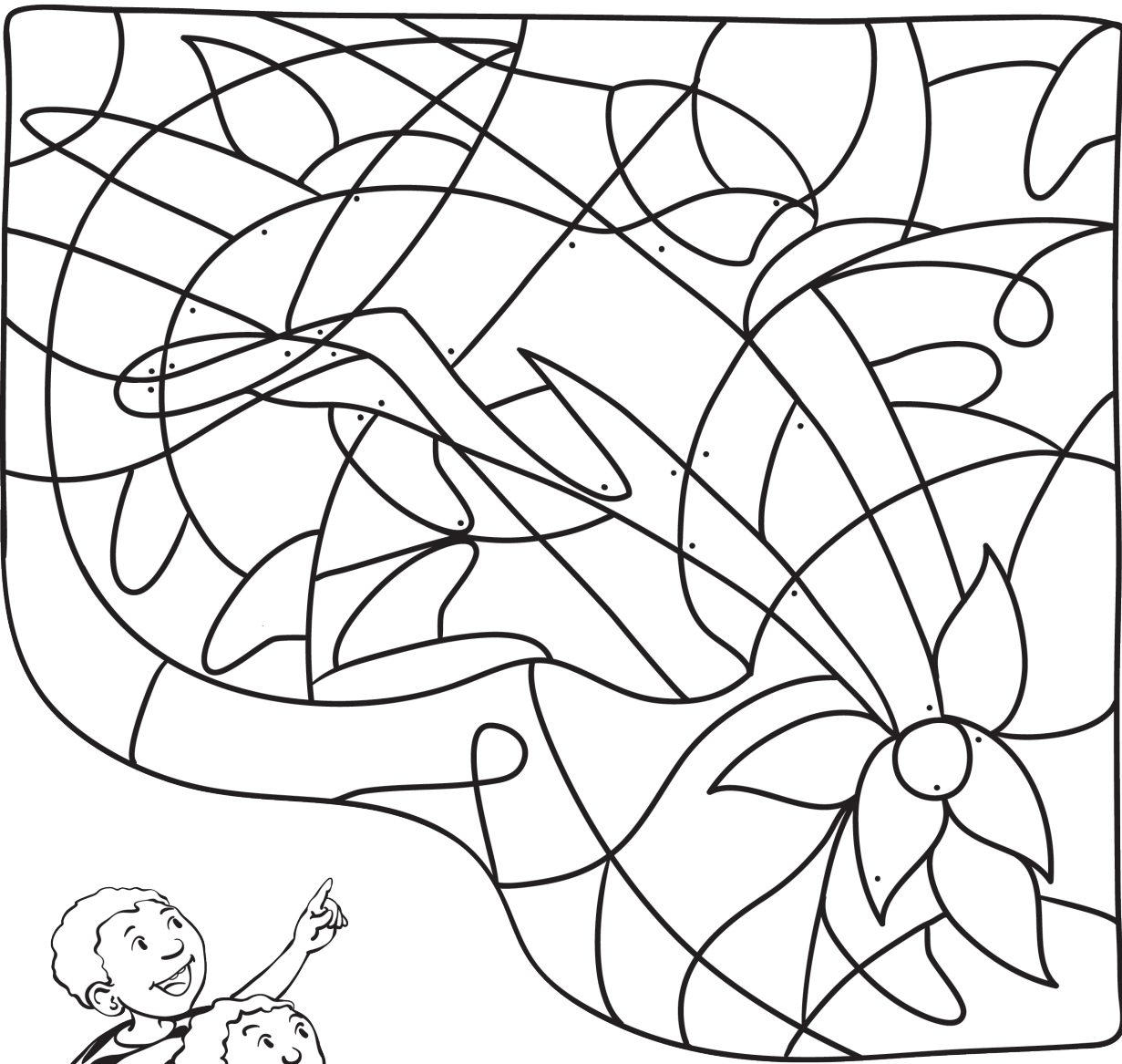
SPOT THE DIFFERENCE



Can you spot 5 differences?



# A PICTURE PUZZLE



The children have seen something! Colour the pieces with dots to find out what it is.

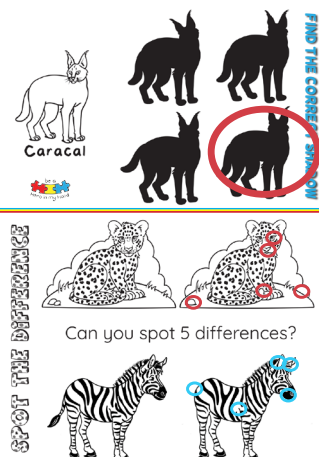
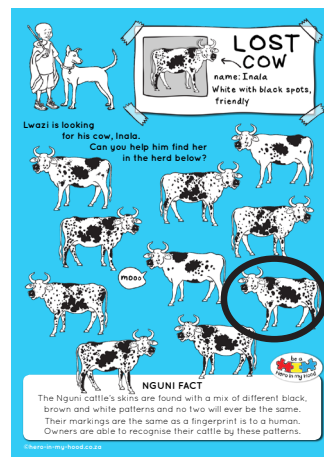
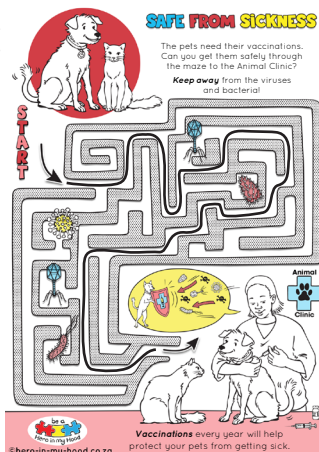
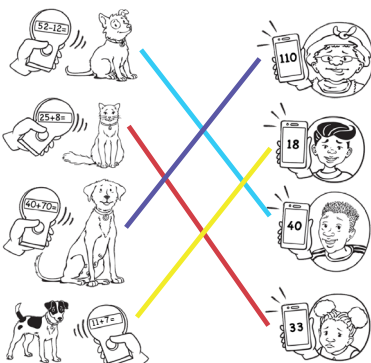


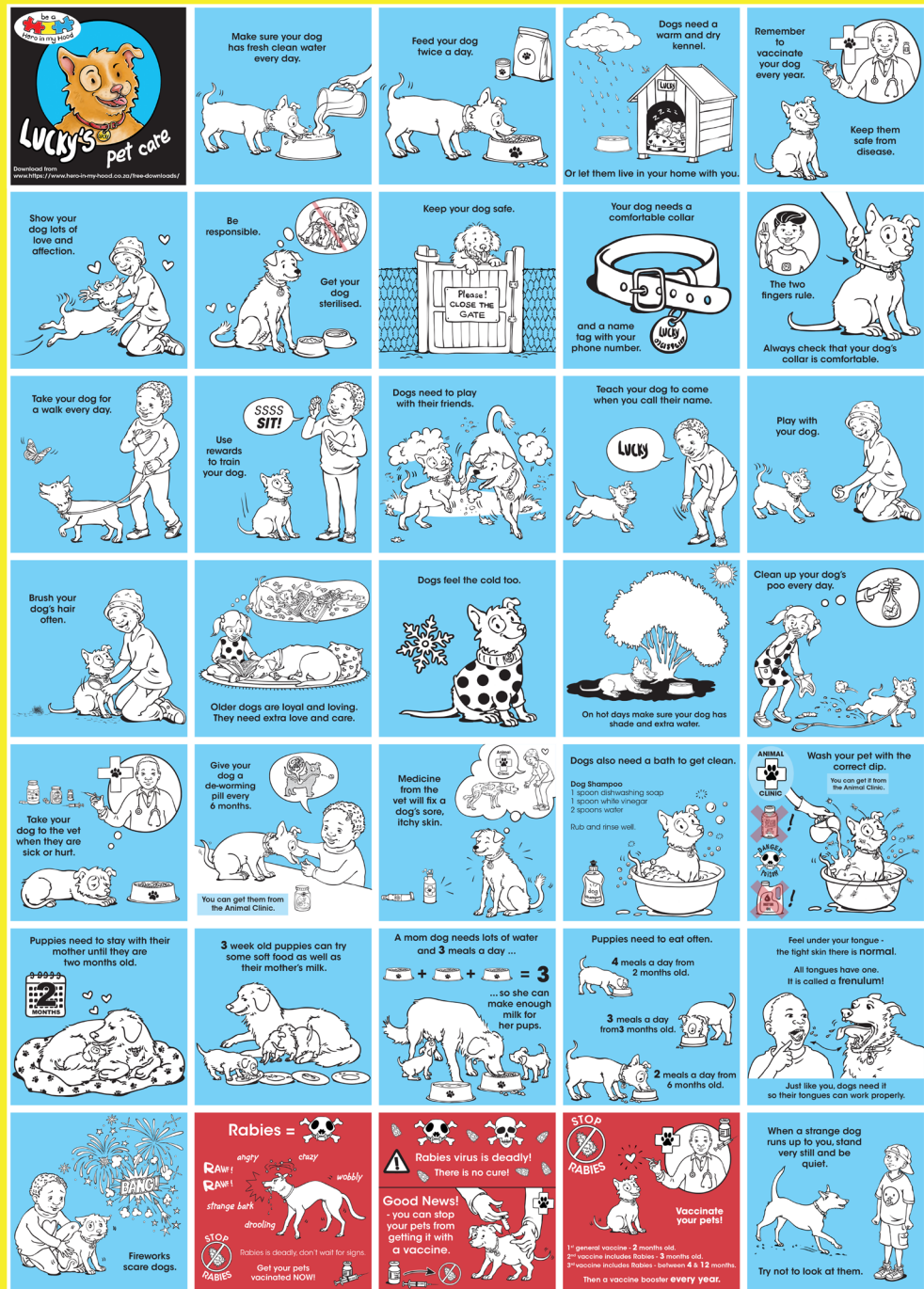
## Fact

These animals don't drink water like us - think about where they live! Instead they absorb water from their food.

## ANSWERS

### SAVE THE SEAL: C





© Hero in my Hood • [www.hero-in-my-hood.co.za](http://www.hero-in-my-hood.co.za) • [mandy@hero-in-my-hood.co.za](mailto:mandy@hero-in-my-hood.co.za) • WhatsApp: +27 82 578 2018 • Tel: +27 21-762 9767



encouraging children to  
be courageous and kind

[www.hero-in-my-hood.co.za](http://www.hero-in-my-hood.co.za)

Tel: 021 762 9767

WhatsApp: 082 578 2018

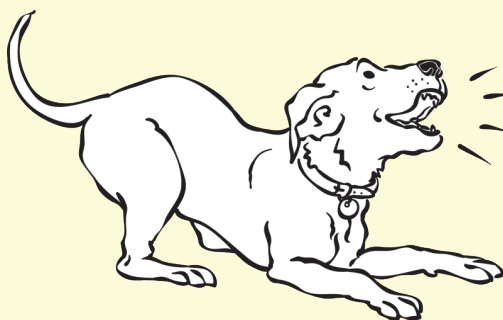
e-mail:

[mandy@hero-in-my-hood.co.za](mailto:mandy@hero-in-my-hood.co.za)

**Awesome  
educational stuff**

Check out our website for  
**FREE DOWNLOADS.**

Posters, handouts and  
colouring books  
in our on-line shop.



These social media  
messages about dog care  
can be downloaded **FREE**  
from our website.  
Please share.

This A1 poster can be  
downloaded from our online  
shop for you to print, or order  
a printed copy from us.



Available in English, Afrikaans, isi-Xhosa, isi-Zulu and Sesotho.





**You can help the SPCA  
team to rescue and  
rehabilitate.**

By filling the hosepipe with coins you can help them pay for transport, food and medicine for wild animals who need our help.



When you have completed your money hosepipe, ask Mom or Dad to bring you to the SPCA to hand it in to Lucille, Farrant or Bongani. We will post your picture on our Facebook page.